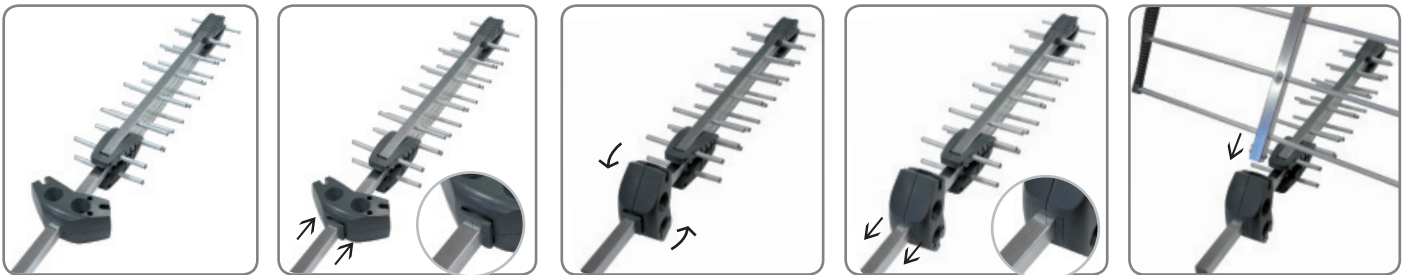


HyDra 45

- ✓ **Easy and fast assembling in 5 clicks only and in less than 30 seconds**
- ✓ **No tools needed**
- ✓ **Exclusive design patented by Fte maximal**
- ✓ **Fixed to the mast with bridle and reinforced clamps**
- ✓ **Savings in storage space and transport**

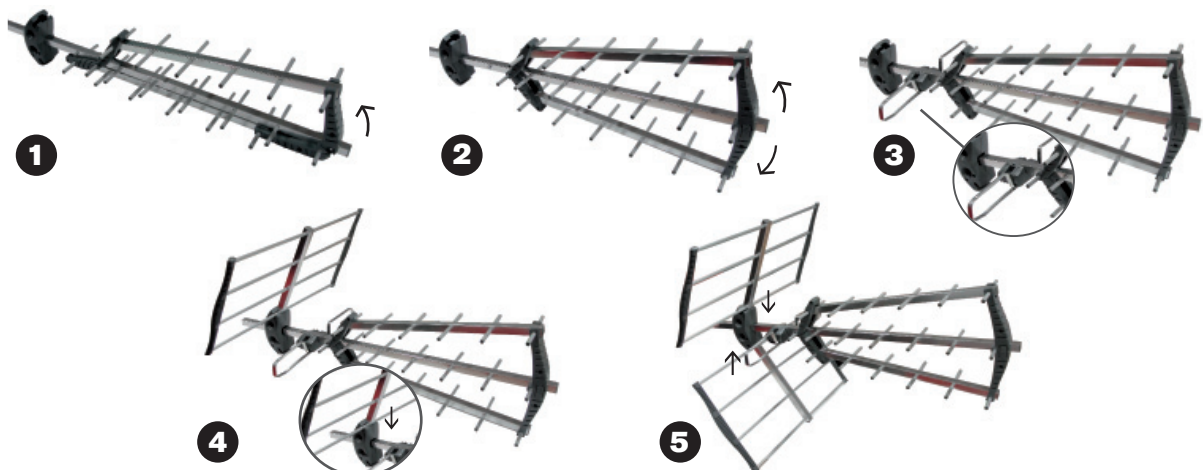


**Optimization of the packaging system** with savings in the space and size in the transport and in storage too, thanks to our exclusive and patented system in which the base turns 90° reducing the package size up to 25%\*.



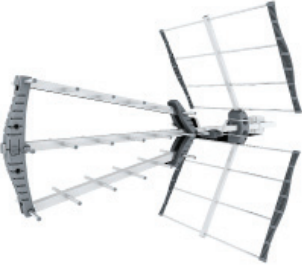
\* Comparative made with EVO series

**Intuitive system and fast assembly**



## HyDra 35

### Technical Features

	Reference	Code	Features
	HyDra 35	9003930	28 elements Channel: 21-69 Gain: 15 dB Front/Back relation (f/b): 24 dB Horizontal reception angle (-3 dB): 35° Impedance: 75 Ohms Length: 810 mm Weight of the antenna: 1,5 Kg


### Packaging solutions

Reference	Packaging	Measures (mm)			Volume (cm <sup>3</sup> )	Weight (Kg)	EAN 13
HyDra 35* (9003930)	Box 1/2	880	135	70	8.316	1,3	8436049496122
	Box 2/2	535	320	40	6.848	0,625	
* Presentation in one unit boxes. It is composed by 2 boxes.							
HyDra 35/12* (9003930/12)	Master	1.000	580	300	226.200	25,6	8436049496146

\* Presentation in master box with 12 units.

## HyDra 45

### Technical Features

	Reference	Code	Features
	HyDra 45	9003932	45 elements Channel: 21-69 Gain: 17 dB Front to Back Ratio (f/b): 28 dB Horizontal reception angle (-3 dB): 32° Impedance: 75 Ohms Length: 1.020 mm Weight of the antenna: 1,8 Kg

### Packaging solutions

Reference	Packaging	Measures (mm)			Volume (cm <sup>3</sup> )	Weight (Kg)	EAN 13
HyDra 45* (9003932)	Box 1/2	1060	135	70	10.017	1,5	8436049496139
	Box 2/2	550	430	40	9.460	0,965	
* Presentation in one unit boxes. It is composed by 2 boxes.							
HyDra 45/6* (9003932/6)	Master	1.120	440	285	140.448	16,0	8436049496153

\* Presentation in master box with 12 units.